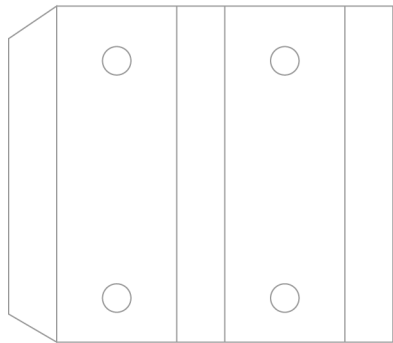
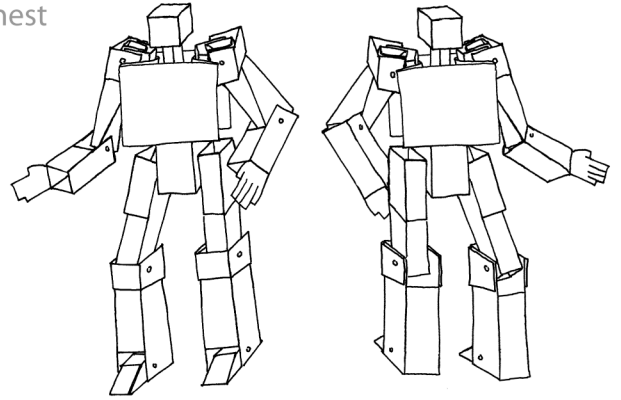
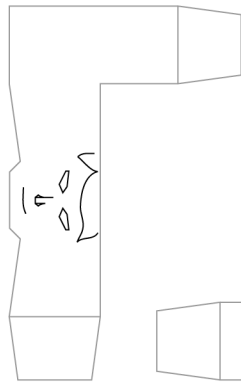




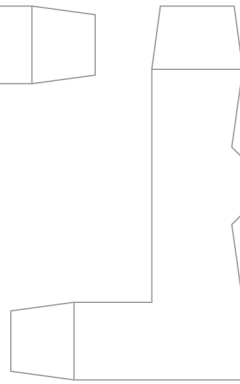
chest



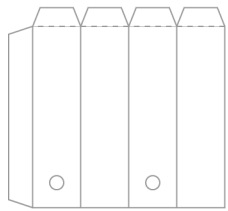
torso



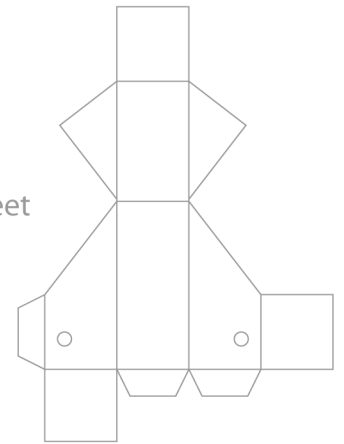
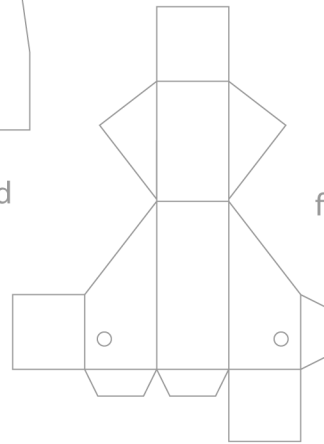
head



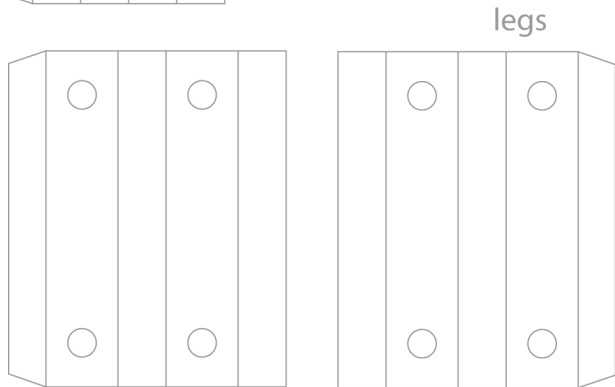
alternate  
blank head



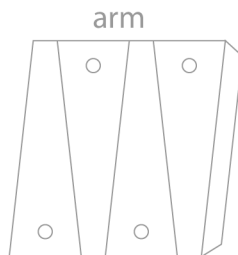
neck



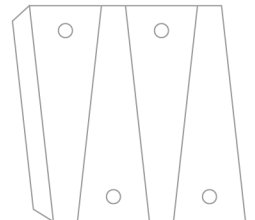
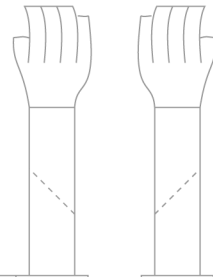
feet



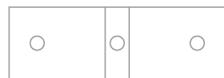
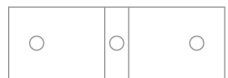
legs



arm



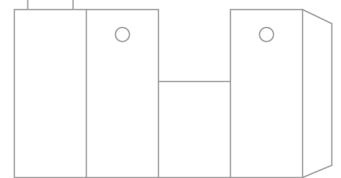
arm



shoulders

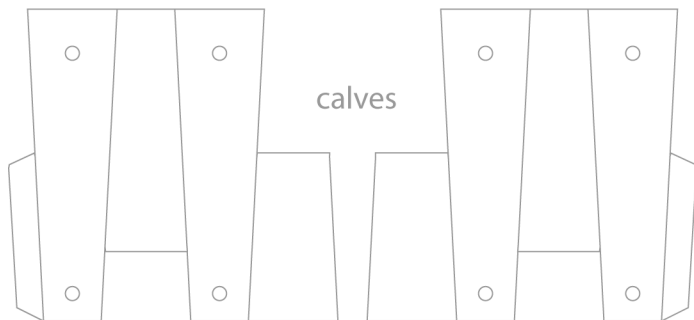


forearms



hips  
(optional)

shoulder pads (optional)



calves

knee pads (optional)



**PAPER  
ROBOTS  
1999.COM**

INSTRUCTIONS:

**STEP 1: Print.** Designed to fit on standard 8.5 x 11 inch paper and to be printed with any printer. A thick matte paper works best for extra sturdiness. Also, draw on any facial expressions or cool art at this time.

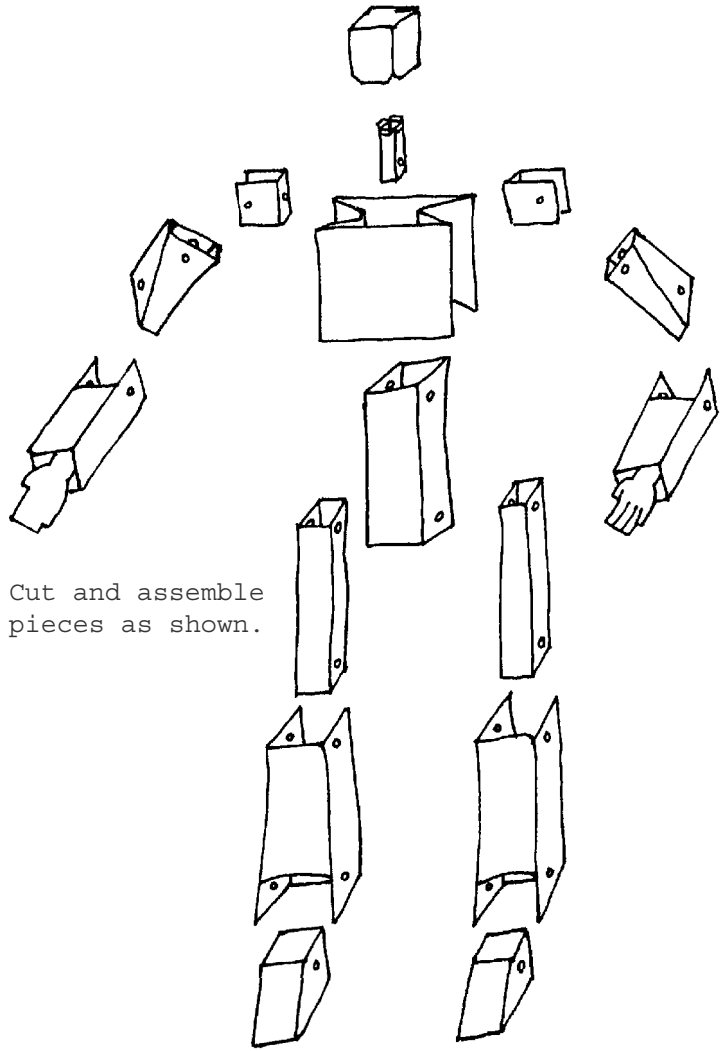
**STEP 2: Punch.** Using an awl or pen, lay the printed page on a soft surface (such as the carpet) and poke out the marked holes. It is easier to do it now than after the pieces are cut out.

**STEP 3: Cut.** Using your best pair of scissors and a steady hand, cut out all the limbs and shapes.

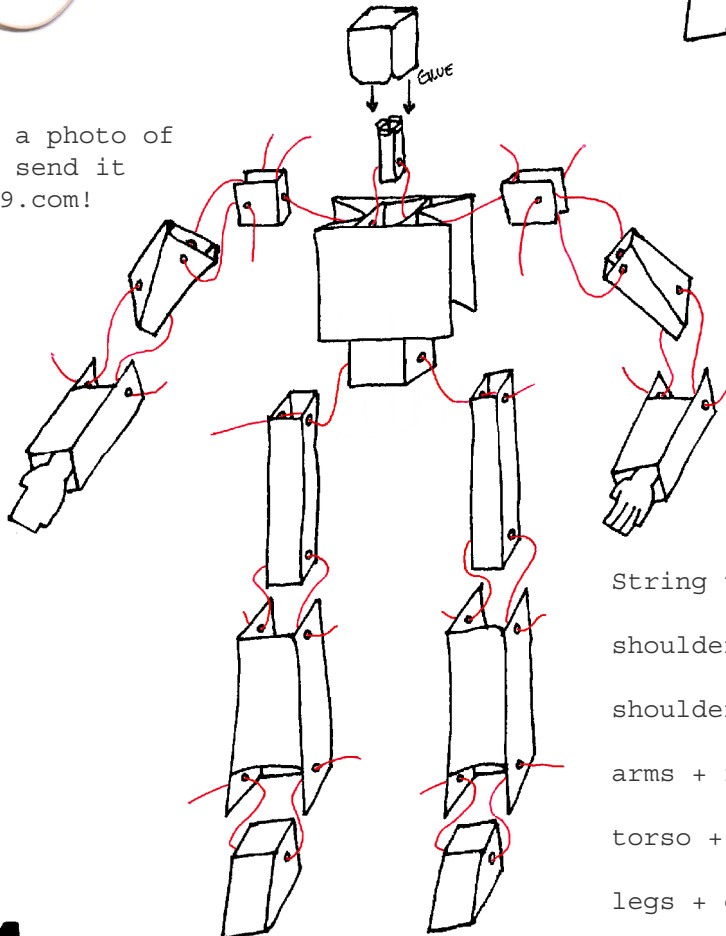
**STEP 4: Glue.** Fold the pieces along the designated fold lines and add a touch of glue to the white tab areas of each piece.

**STEP 5: String.** Cut some rubber bands (or wire or fishing line) and use them to string together the various limbs. Be sure to tie a knot on each end so it doesn't slip through the holes you punched earlier. A bent staple makes a great sewing needle for threading.

**STEP 6: Enjoy!** Now take a photo of your paper creation and send it to us at [PaperRobots1999.com](http://PaperRobots1999.com)!



Cut and assemble pieces as shown.



Slide torso into chest.

Glue head to neck.

String together:

shoulders + chest + torso + neck;

shoulders + arms;

arms + forearms;

torso + legs;

legs + calves;

calves + feet.