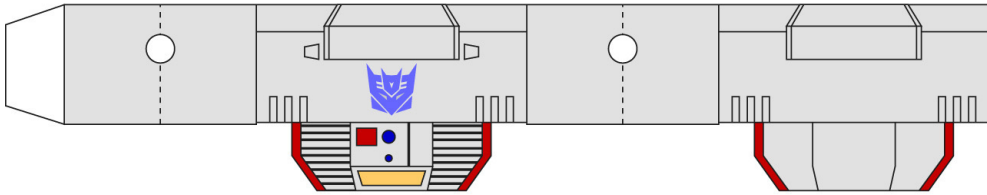
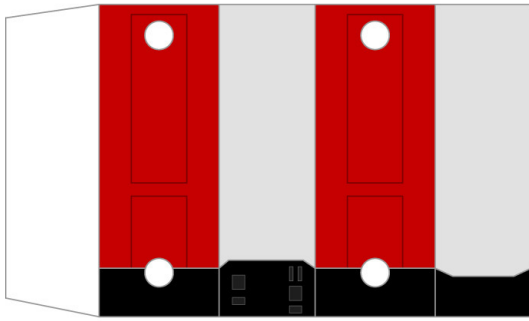


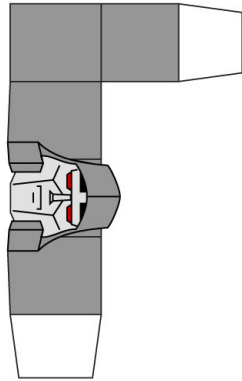
**PAPER
ROBOTS
1999.COM**



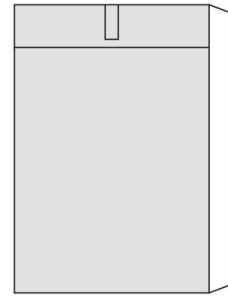
chest



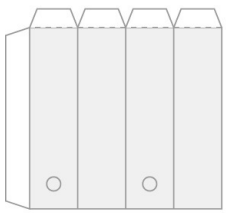
torso



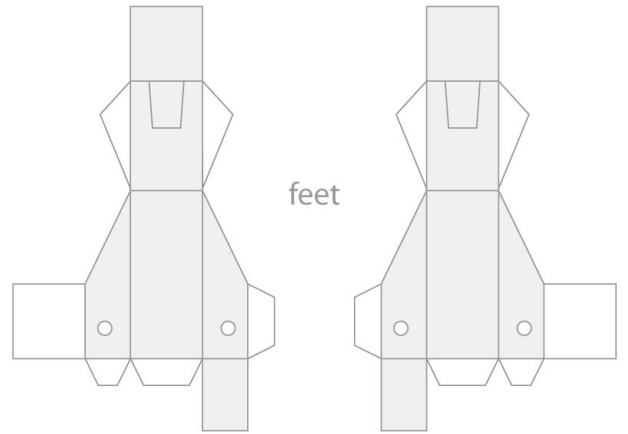
head



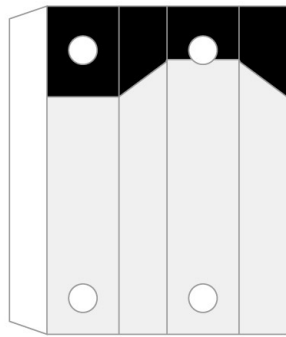
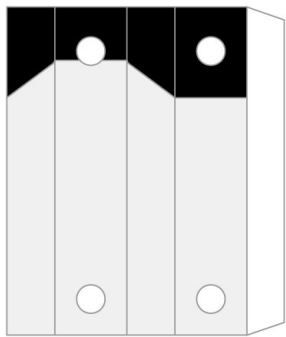
barrel



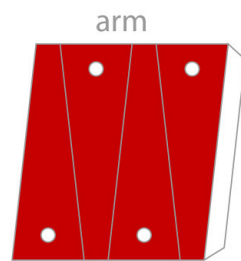
neck



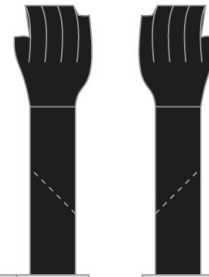
feet



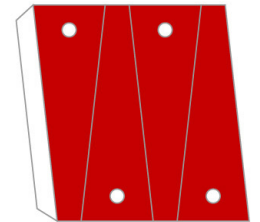
legs



arm



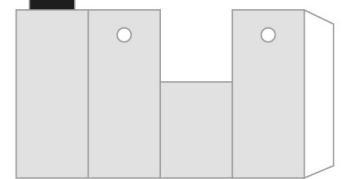
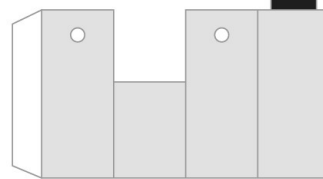
hands



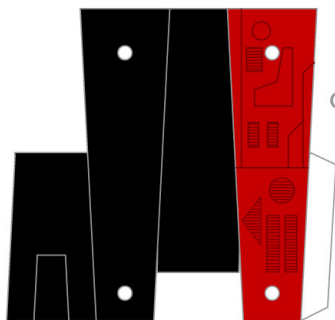
arm



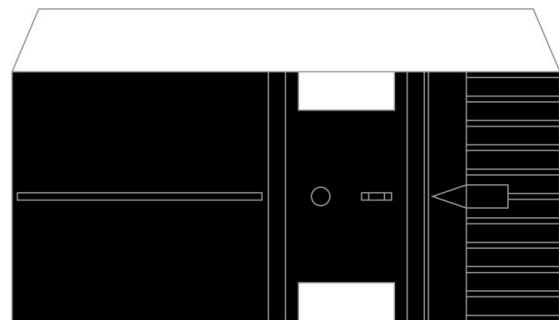
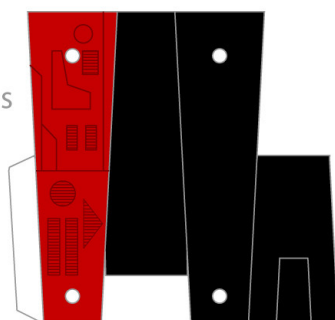
shoulders



shoulder pads



calves



cannon

cannon
mount



INSTRUCTIONS:

STEP 1: Print. Designed to fit on standard 8.5 x 11 inch paper and to be printed with any printer. A thick matte paper works best for extra sturdiness. Also, draw on any facial expressions or cool art at this time.

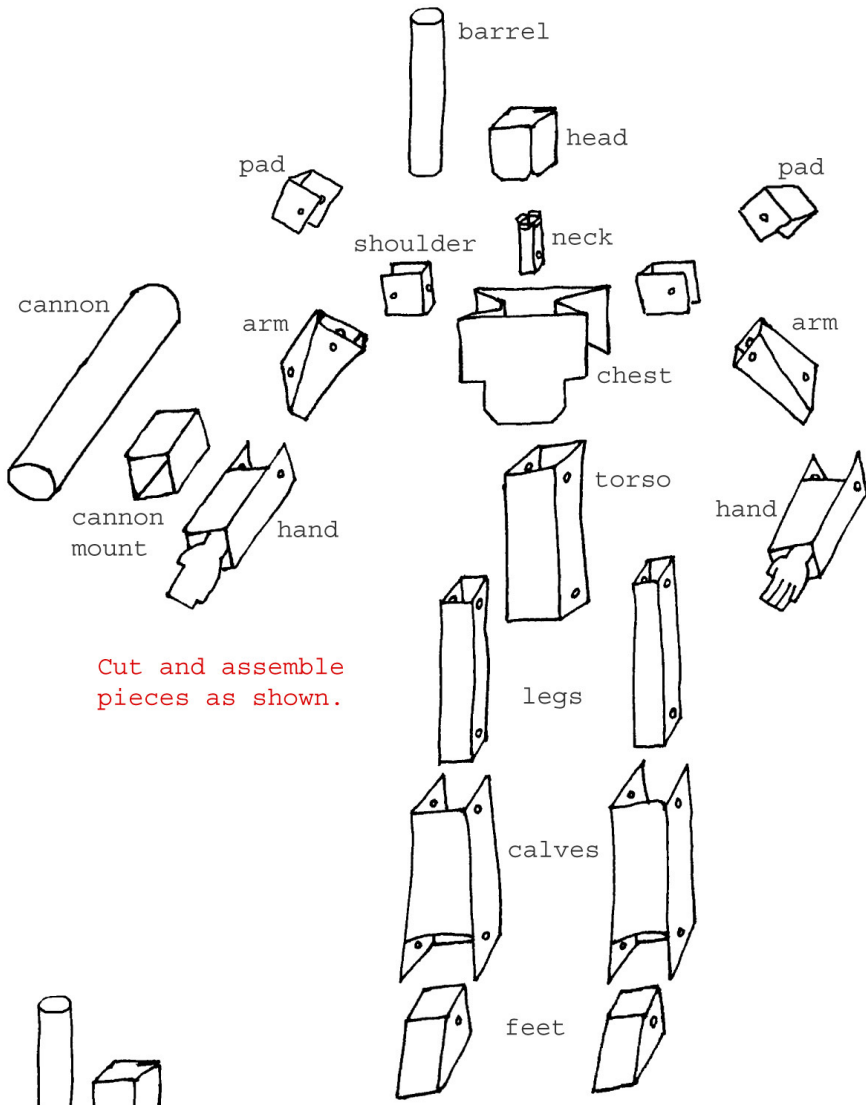
STEP 2: Punch. Using an awl or pen, lay the printed page on a soft surface (such as the carpet) and poke out the marked holes.

STEP 3: Cut. Using your best pair of scissors and a steady hand, cut out all the limbs and shapes.

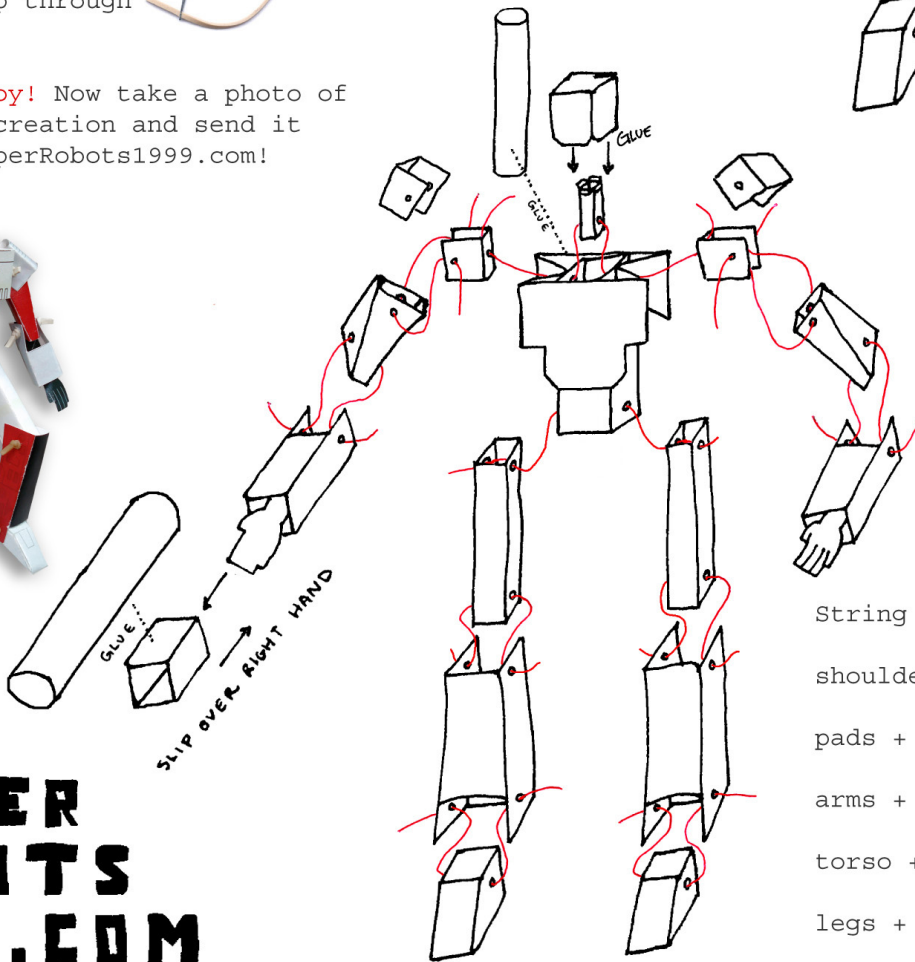
STEP 4: Glue. Fold the pieces along the designated fold lines and add a touch of glue to the white tab areas of each piece.

STEP 5: String. Cut some rubber bands (or wire or fishing line) and use them to string together the various limbs. A bent paperclip (pictured) makes it easier to thread the string through the holes. Also be sure to tie a knot on each end so it doesn't slip through the holes.

STEP 6: Enjoy! Now take a photo of your paper creation and send it to us at PaperRobots1999.com!



Cut and assemble pieces as shown.



Slide torso into chest.
 Glue head to neck.
 Glue barrel to back.
 Glue cannon to cannon mount.

String together parts as follows:
 shoulders + chest + torso + neck;
 pads + shoulders + arms;
 arms + hands;
 torso + legs;
 legs + calves;
 calves + feet.

**PAPER
 ROBOTS
 1999.COM**